

# T90cn-3,5 2U



Ratio  
Rapporto / Verhältnis  
**1.1**



RPM  
Velocità / Drehzahl max.  
**4.000 min<sup>-1</sup>**



Max. axial load  
Max. carico assiale / Max. Axialbelastung  
**1.250 N**



Torque  
Momento torcente / Drehmoment  
**50 Nm**



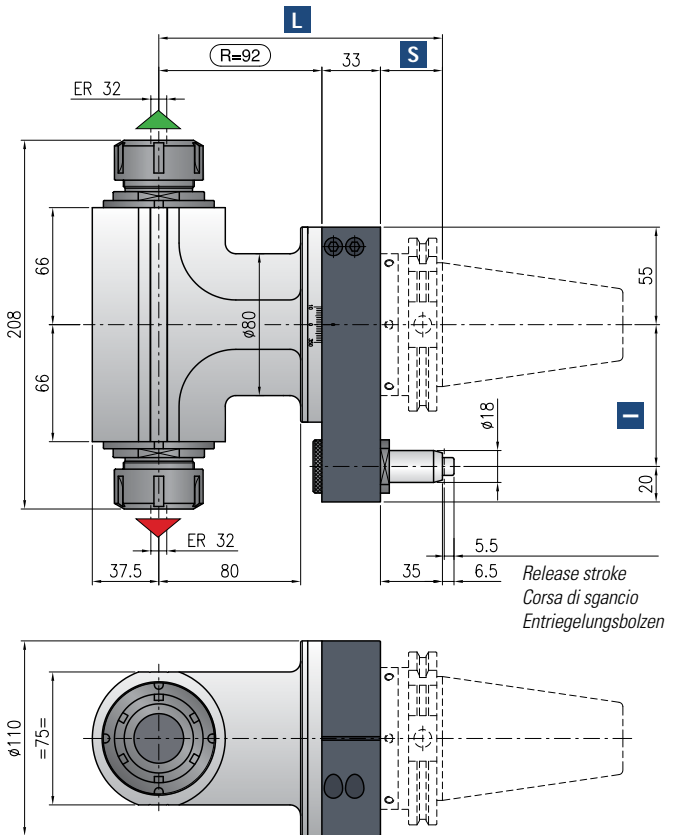
Weight  
Peso / Gewicht  
**12 kg**



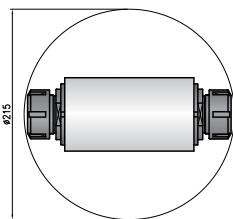
Collet  
Pinza / Spannzange  
**ER-32 Ø 2/20 mm**

**\* STANDARD EQUIPMENT INCLUDES:**

- Wooden case - wrenches - Grease tube - Instruction book
- Cassa - Ghiera ER chiavi di servizio - Tubetto di grasso - Libro istruzioni
- Holzkiste - Schraubenschlüssel - Tube mit Fett - Bedienungsanleitung



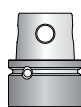
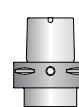
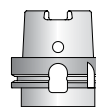
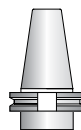
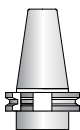
Minimum diameter without tool  
Diametro minimo senza utensile  
Durchmesser min. ohne Werkzeug



Direction of rotation same as machine spindle / senso di rotazione uguale al mandrino / Drehrichtung gleich wie Antriebsspindel



Direction of rotation opposite to machine spindle / senso di rotazione contrario al mandrino / Drehrichtung entgegen Antriebsspindel



Shank/Cono/Aufnahme	DIN-69871	CAT	MAS-BT	HSK		CAPTO		KM
Size/Grandezza/Größe	50		50	63-80	100	C6	C8	63
<b>I</b>	80-110		80-110	80-110	80-110	80-110	80-110	80-110
<b>S</b>	35		41	42	45	38	40	40
<b>L</b>	160		166	167	170	163	165	165

\*optional

Non interchangeable input drive shank/ Coni di attacco non intercambiabili/ Nicht wechselbare Aufnahme

**Option / Opzione / Option**



bar max  
**12**

Coolant through pin  
Refrigerante attraverso il perno  
Kühlmittelzufuhr durch Bolzen



min<sup>-1</sup>  
**6.000**

High speed optional RPM max.  
Opzione alta velocità RPM max.  
Drehzahl max.



Ø mm  
**27**

Arbor output  
Porta fresa  
Fräseraufnahme



Ø mm max.  
**20**

Weldon output  
Weldon  
Weldon-Aufnahme



**HSK-40**

Quick Change  
Attacco rapido  
Schnellwechsellafnahme